

A3FM SIZE: 1/2"~4"



3-PIECE FLANGED END BALL VALVE
ACC. TO ANSI-CLASS 150, DIN PN16/PN40
STAINLESS STEEL AISI 316 (DIN 1.4408)
CARBON STEEL S-45C (DIN 1.0619)

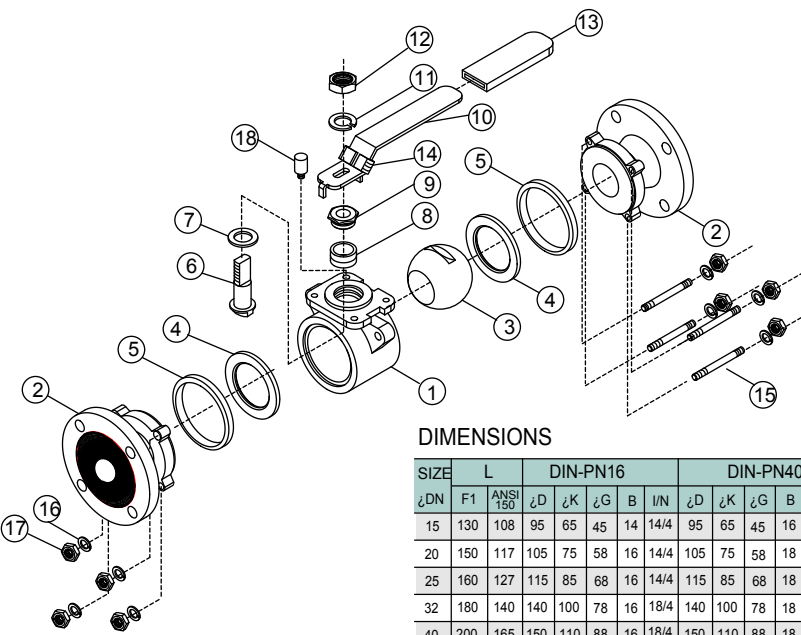
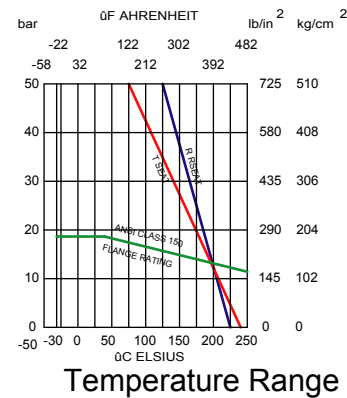
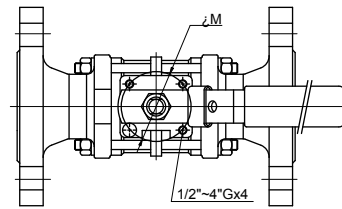
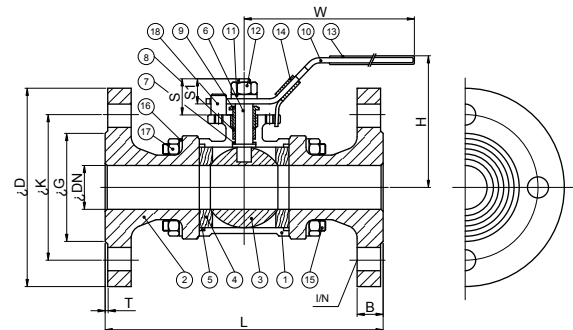
FEATURES :

- *Face-to-face DIN 3202-F1, ANSI 16.1
- *Locking device, Lug body.
- *Blow-out proof stem
- *Investment casting body and cap
- *Material: ASTM-A351-CF8M, ASTM-A351-CF8 & ASTM-A216-WCB

***OPTION: Locking device**
Mounting Pad ISO 5211

MATERIALS LIST

ITEM	PARTS	QTY	MATERIAL	
			A3MF	A3MF-C
1	BODY	1	ASTM-A351-CF8M	ASTM-A216-WCB
2	FLANGED END CAP	2	ASTM-A351-CF8M	ASTM-A216-WCB
3	BALL	1	ASTM-A351-CF8M	ASTM-A351-CF8M
4	BALL SEATS	2	PTFE	PTFE
5	JOINT GASKET	2	PTFE	PTFE
6	STEM	1	AISI 316	AISI 316
7	THRUST WASHER	1	PTFE	PTFE
8	STEM PACKING	2	PTFE	PTFE
9	GLAND NUT	1	AISI 304	AISI 304
10	HANDLE	1	AISI 304	AISI 304
11	STEM WASHER	1	AISI 304	AISI 304
12	STEM NUT	1	AISI 304	AISI 304
13	PLASTIC COVER	1	P.V.C	P.V.C
14	LOCK DEVICE	1	AISI 304	AISI 304
15	BOLT	4 (3",4" x 6 pcs)	AISI 304	AISI 304
16	SPRING WASHER	8 (3",4" x 12pcs)	AISI 304	AISI 304
17	HEX NUT	8 (3",4" x 12pcs)	AISI 304	AISI 304
18	STOP PIN	1	AISI 304	AISI 304



DIMENSIONS

SIZE	L	DIN-PN16					DIN-PN40					ANSI-150					T	H	W	S	S1	ISO 5211		Cv	TORQUE		
		ANSI 150	∅D	∅K	∅G	B	∅D	∅K	∅G	B	∅D	∅K	∅G	B	∅D	∅K						∅G	B		∅M	G	FACTOR
15	130	108	95	65	45	14	14/4	95	65	45	16	14/4	89	60.5	35	11.2	16/4	2	77	129	15	10	36	M5	11.2	54	2.2
20	150	117	105	75	58	16	14/4	105	75	58	18	14/4	98	70	43	12.7	16/4	2	76	157	18	14	36	M5	21	78	3.5
25	160	127	115	85	68	16	14/4	115	85	68	18	14/4	108	79.5	51	14.3	16/4	2	93	175	22	16	42	M5	35	106	4.0
32	180	140	140	100	78	16	18/4	140	100	78	18	18/4	117	89	64	15.9	16/4	2	99	175	23	16	42	M5	57	150	6.0
40	200	165	150	110	88	16	18/4	150	110	88	18	18/4	127	98.5	73	17.5	16/4	3	112	188	25	17	50	M6	80	200	7.2
50	230	178	165	125	102	18	18/4	165	125	102	20	18/4	152	120.5	92	19.1	19/4	3	120	188	23	17	50	M6	150	280	10
65	290	190	185	145	122	18	18/4	185	145	122	22	18/8	178	139.5	105	22.3	19/4	3	161	275	41	30	70	M8	265	510	20
80	310	203	200	160	138	20	18/8	200	160	138	24	18/8	190	152.5	127	23.9	19/4	3	171	275	40	30	102	M10	415	780	25
100	350	229	220	180	158	20	18/8	235	190	162	24	22/8	229	190.5	157	23.9	19/8	3	193	309	47	37	102	M10	780	1130	39.5

UNIT:mm